

TIDA KAMARA

SET 1

WHITE PASSING, TIDA'S RASTAFARI CAP. SET UP

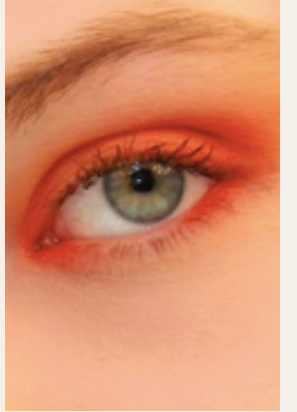
- 5 to 6 black persons sitting on chairs, with Tida in the middle.
- 5/6 persons.
 - They are sitting with their backs to the camera.
 - All of them are wearing a rastacap.
- Tida
 - She is also sitting with her back to the camera.
 - Her face is looking straight at the camera.
 - She is the only one not wearing a rastacap, no headpiece at all, lot of volume in her hair.
 - Tida's looking straight at the camera.
 - Her hair symbolises her crown, her hair needs to be as big as possible.

LOCATION

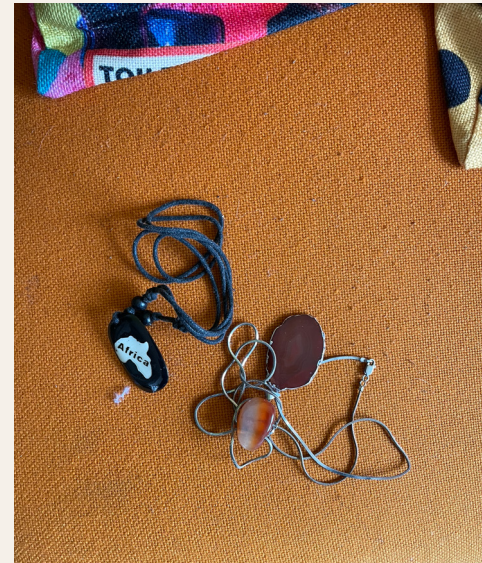
- Bar Bario

TECHNICAL INFORMATION

- Framing
 - Landscape image, Tida's face in the middle. (need to be sure it looks nice once printed with the binding in the middle)
- Lighting
 - Dark image with one spotlight pointing at Tida's face.
- Material
 - Spotlight as key lighting (Fidelio)
 - Godox Led M150 as fill light (HvA)
 - If analogue, Kodack Portra 400



STYLING



SET 2

TIDA'S MUSIC STUDIO

SET UP

- Tida's kitchen (living room if more convinient)
 - She is sitting on a chair, her legs are on the side piano.
 - She is rolling a joint (paper, weed, grinder on the table)

LOCATION

- Music Studio

TECHNICAL INFORMATION

- Framing
 - Portrait image
- Lighting
 - Dark image with one spotlight pointing at Tida's face.
- Material
 - Spotlight as key lighting super diffused ! (Fidelio)
 - Godox Led M150 as fill light (HvA)
 - If analogue, Kodack Portra 400



STYLING



SET 3

TIDA'S LIVING ROOM

SET UP

- Tida's bed room
 - She is laying on her bed or sitting on the floor in front of her bed.
 - She wears her Rastafari cap.
 - Music component (DJ set, Headphones)
 - Vinyl on the wall on top of her bed

LOCATION

- Tida's or Fidelio's place

TECHNICAL INFORMATIONS

- Framing
 - Landscape image,
- Lighting
 - Lot of constrast in this images. Light as to be soft on Tida's face but the rest of the room can have a different atmospher.
 - Play with light and shadow from natural lighting.
- Material
 - Spotlight as key lighting but well diffused (Fidelio)
 - If analogue, Kodack Portra 400



STYLING

